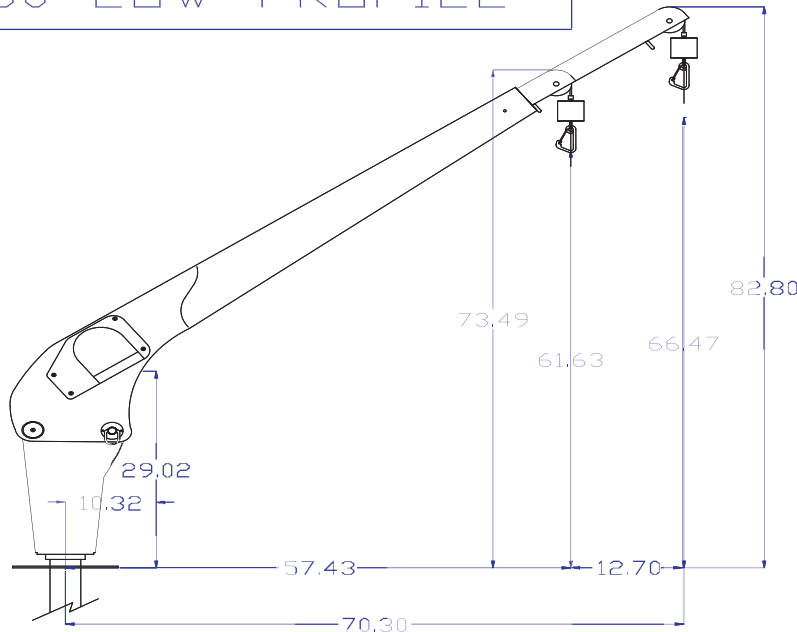


650 LOW PROFILE

The 650 Low Profile

Jan 02



Recommended for tenders in the 10' to 11 1/2' range that weigh less than the 650lbs. Full roller bearings. All stainless cable, weight, and hook. Remote controlled by a hand pendant. Painted to match. Can be modified for that special need. We can raise or lower the base, and - or make the davit longer or shorter to fit your own situation.

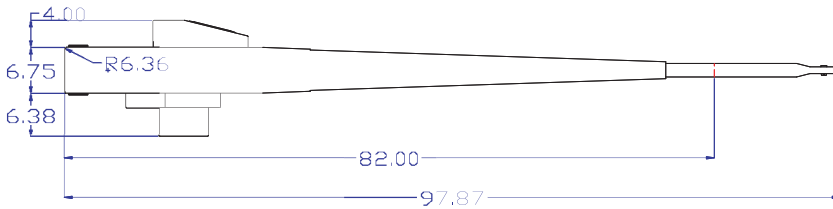
Standpipe or pyramid models available.

With our experience of many custom fabrications, we can meet many of the different requirements.

Some davit manufacturers mount their davit motors vertically inside of their davits for that flatter look. We don't. This is against motor manufacturer's recommended installation of horizontal mounting.

Horizontal tracks better to the motor drum.

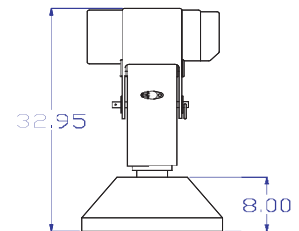
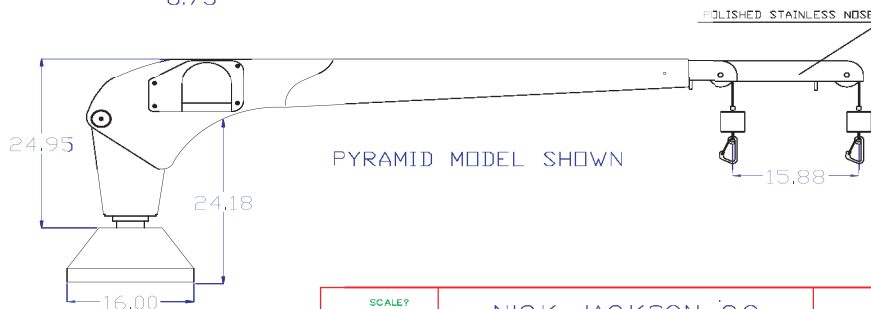
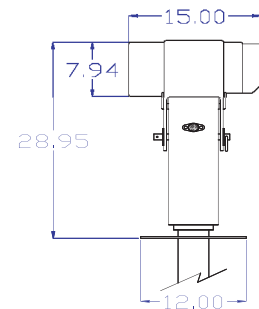
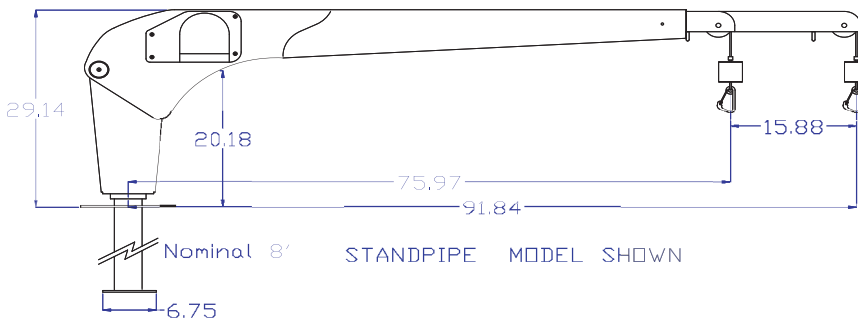
Vertical mounting can cause the cable to mistrack, by "falling down" during operation and be prone to damage and or binding, causing you problems when lifting.



Motor can be reverse mounted on the davit.

some measurements may change without notice

Power rotation and or power booming functions available.



SCALE?	NICK JACKSON CO.	Drawn
Equipment No. EQUIP_NO.?		DATE
WD No. Drawing Title	650#-L.P.	05-01
WC_NO.?		Drawing No. DWG

STANDPIPE LENGTH : nominal 8' from top deck to next lower level
 ELECTRICAL REQUIREMENT : 12v power- 100 amps. 24v power- 100 amps
 WEIGHT OF UNIT : complete davit - 170lbs. shipping wt. 250 lbs

MATERIAL: 5086 Marine grade aluminum
 PROCESS: Faired, acid etch, alodine, primed, 3 part LP
 FASTENERS: All stainless steel