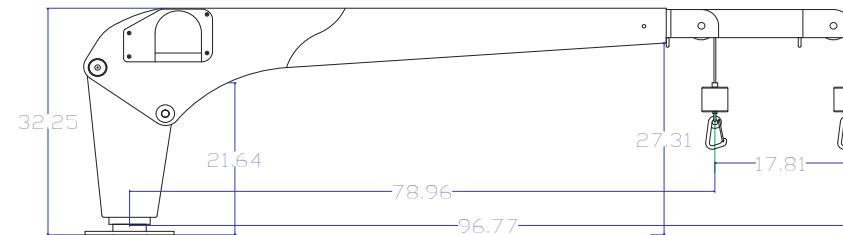
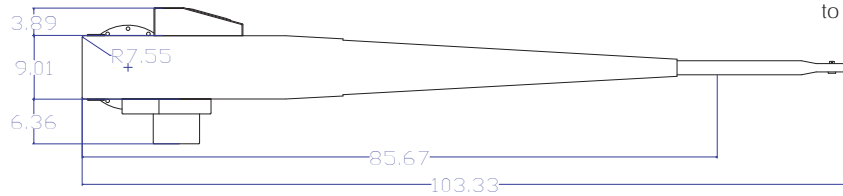
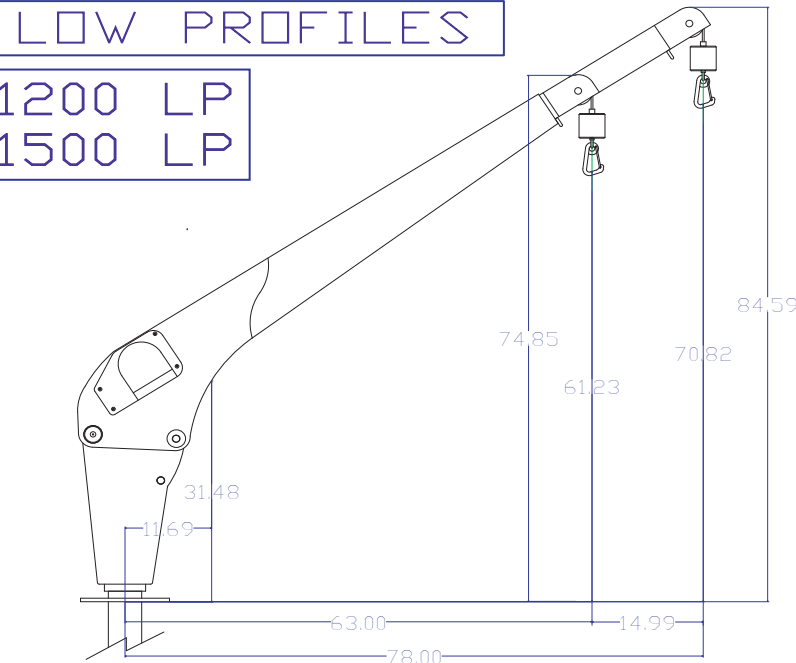


**LOW PROFILES**

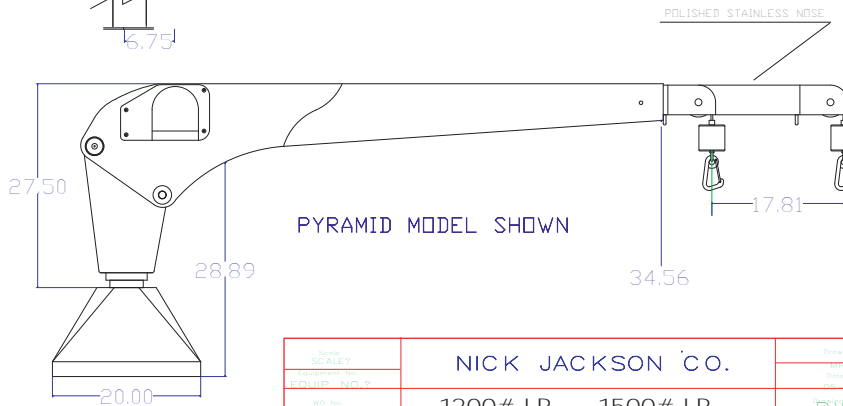
1200 LP  
 1500 LP

**1200 LP & 1500 LP**

Jan 02



Nominal 8' STANDPIPE MODEL SHOWN



PYRAMID MODEL SHOWN

Dimensionally, these units are both the same. The 1500# LP is built with heavier material, as well as having a heavier motor to pull those larger loads. Recommended for tenders in the 12' to 14 1/2' range. Since there is a wide variety of tenders on the market, choose the system that will handle the fully loaded tender of your choice. Both units have the full bearing system for that easy turning ability. All stainless cable, weight, and hook. Remote controlled by a hand held pendant and match painting is standard. We can modify the davit to meet your requirement of use, location, height, and length.

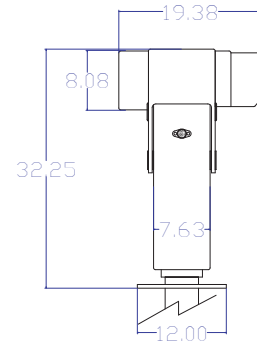
**Standpipe or pyramid models available.**

With our experience of many custom fabrications, we can meet many of the different situations of installation.

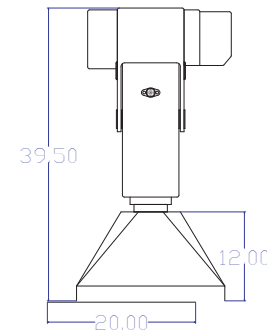
Some davit manufactures mount their electric motors vertical inside of the davits for that flatter look. **We don't. Horizontal cabling tracks better to the winching drum.**

This is against the motor manufacturer's recommended installation guide of preferred horizontal mounting. Vertical mounting can also cause the cable to mistrack, by "falling down" during use of operation and be prone to damage and or binding.

Winch motor can be reverse mounted  
 Power rotation and power booming functions available.



Some dimensions may change without notice



Scale	NICK JACKSON CO.	Drawn
SCALE?		WJD
Customer No.	1200# LP - 1500# LP	Appr.
ORDER NO.?		WJD
WT. No.		DATE
WD. NO.?		DWG

STANDPIPE LENGTH : nominal 8' from top deck to next lower level  
 ELECTRICAL REQUIREMENT : 12v power- 200 amps. 24v power- 200 amps  
 WEIGHT OF UNIT -1200 : complete davit - 195lbs. shipping wt. 350 lbs.  
 WEIGHT OF UNIT -1500 : complete davit- 225 lbs shipping wt. 380 lbs.

MATERIAL: 5086 Marine grade aluminum  
 PROCESS: Faired, acid etch, alodine, primed, 3 part LP  
 FASTENERS: All stainless steel